

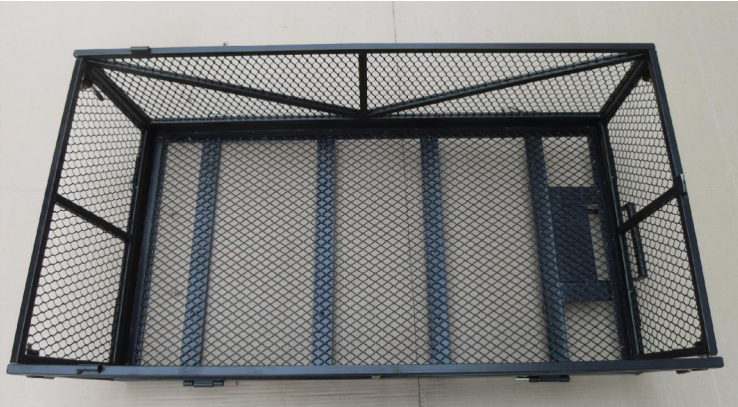

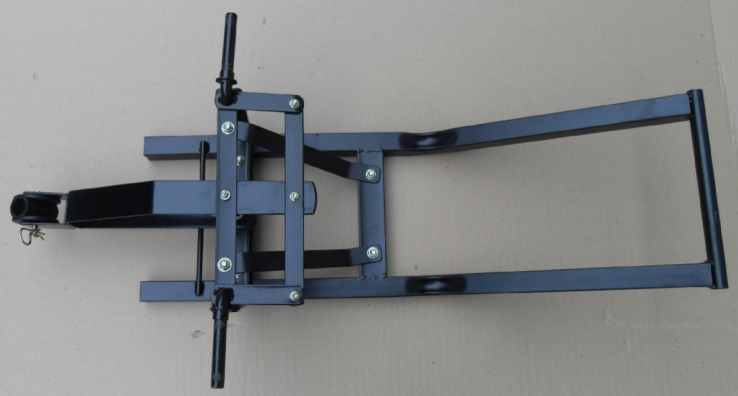
# COBRA



MODEL: GCT300MP

## MULTI PURPOSE DUMP TRAILER OWNERS MANUAL





# I. Parts List

No.	Picture	Description	Qty
1		Steel Tray	1pc
2		Big Plastic Tub	1pc
3		Bed Frame	1pc
No.	Picture	Description	Qty

4		Frame Brace	2pcs
5		Wheel	4pcs
6		Handle	1pc
7		Axle	1pc



# Hardware List

No.	Picture	Description	Qty
8		Lock Nuts&Flat Washer (Used to connect steel tray and bed frame)	4sets
9		Flat Washer & Split Pin(Used while assemble wheels)	4sets

**Notice: All hardware have been pre-assembled in cart.**

## II . Assembly

### STEP I

#### Bed Frame & Steel Tray Assembly

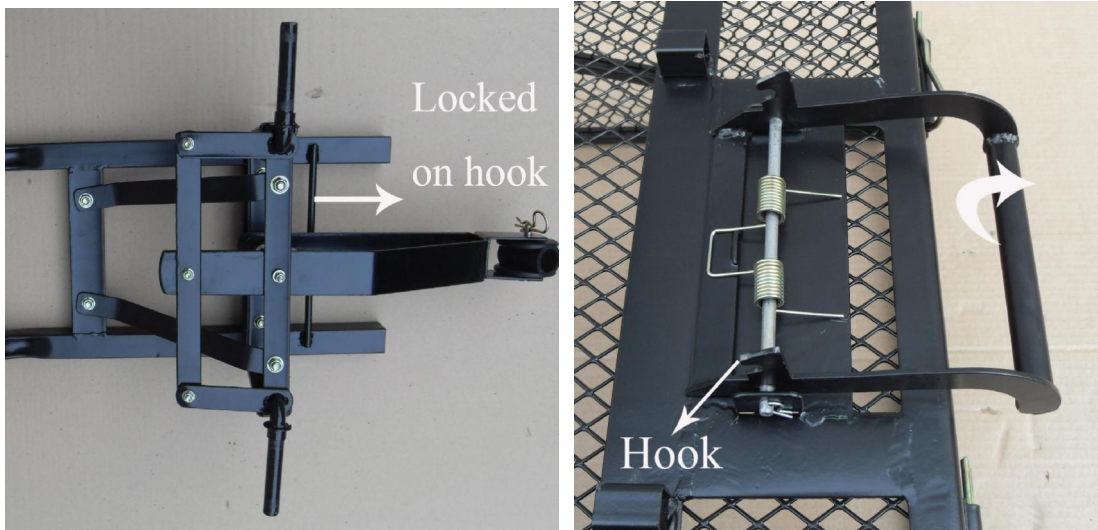
1. Turn steel tray (1) upside down. Dump handle is pre-assembled on steel tray.



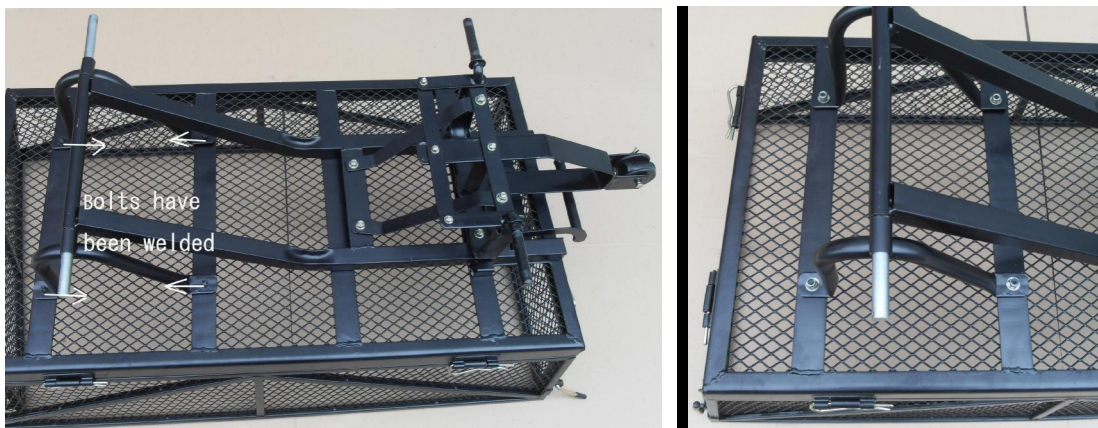
2. 2pcs bed frame braces(4) and 1pc axle(7) are pre-assembled to the cart bed frame(3).



3. Put pre-assembled bed frame on steel tray (1) , and then unlock dump handle by pulling force in upward direction. Making marked part of bed frame locked on the **HOO**K of dump handle.



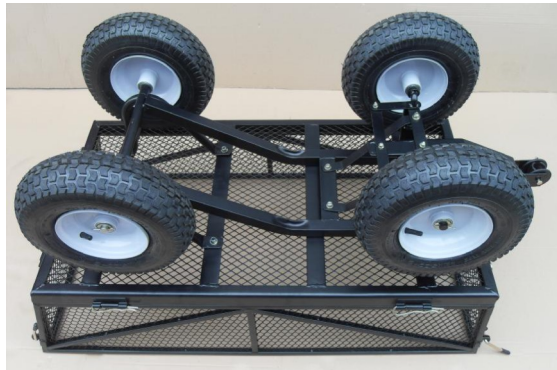
4. Attach pre-assembled bed frame to the steel tray (1) using lock bolt & flat washer(8). **Four bolts have been welded on steel tray**, About bed frame braces, please let **the longer side in front direction**. Tighten all nuts securely.





## STEP II Wheel Assembly

Place the wheels (5) onto axle and bed frame(valve stems facing out), then place Flat washer, and using Split pins(9) to lock.



## STEP III

### Handle Assembly

Turn over the assembled cart, put handle(6) on the yoke.



### Using the convertible Handle:

1. Remove clips and cotter pins.
2. Pushing handlebar in vertical direction and insert clip. Secure by attaching the cotter pin.
3. The second cotter pin is used to attach the handle to the trailer hitch.



**Handle to be trailer hitch:**



**Then the simple yard cart have been assembled:**



**STEP IV:**

Put big plastic tub(2) on steel tray(1), using cotter pin to lock.



**Multi-purpose dump trailer**

