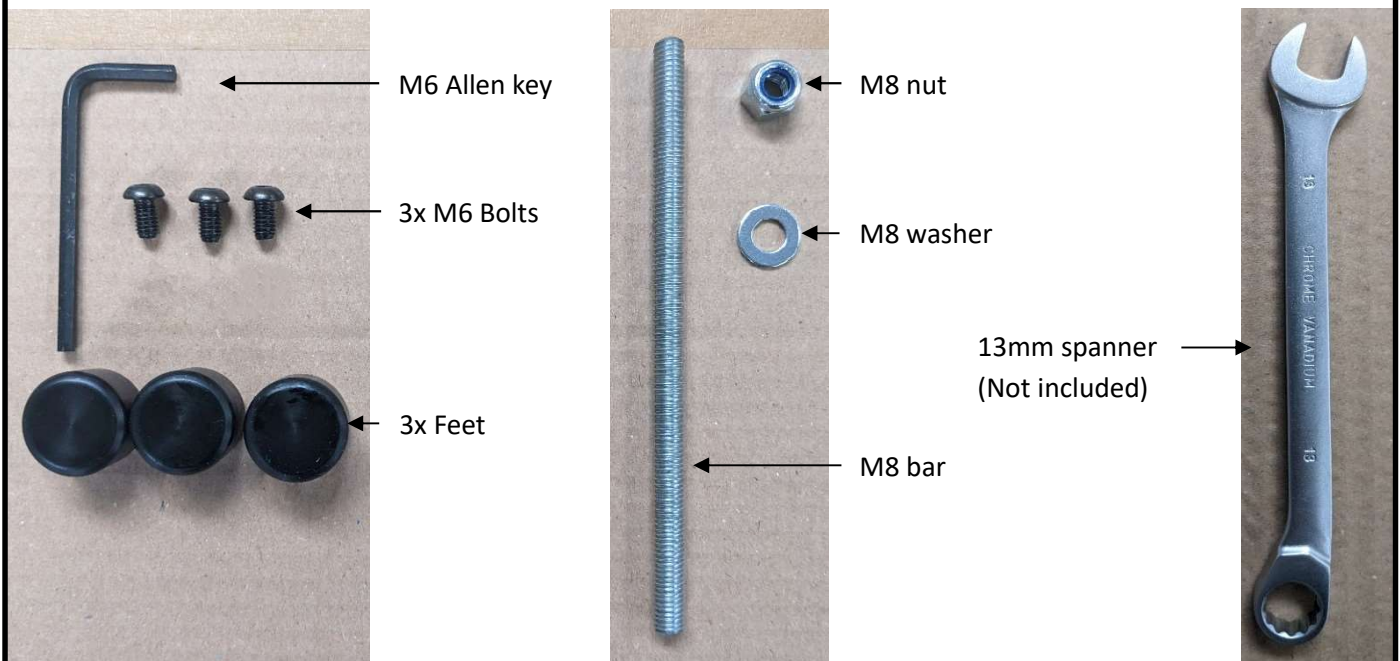


Firestorm Phoenix Patio Heater – Assembly

Firestorm Phoenix Patio Heater Checklist:

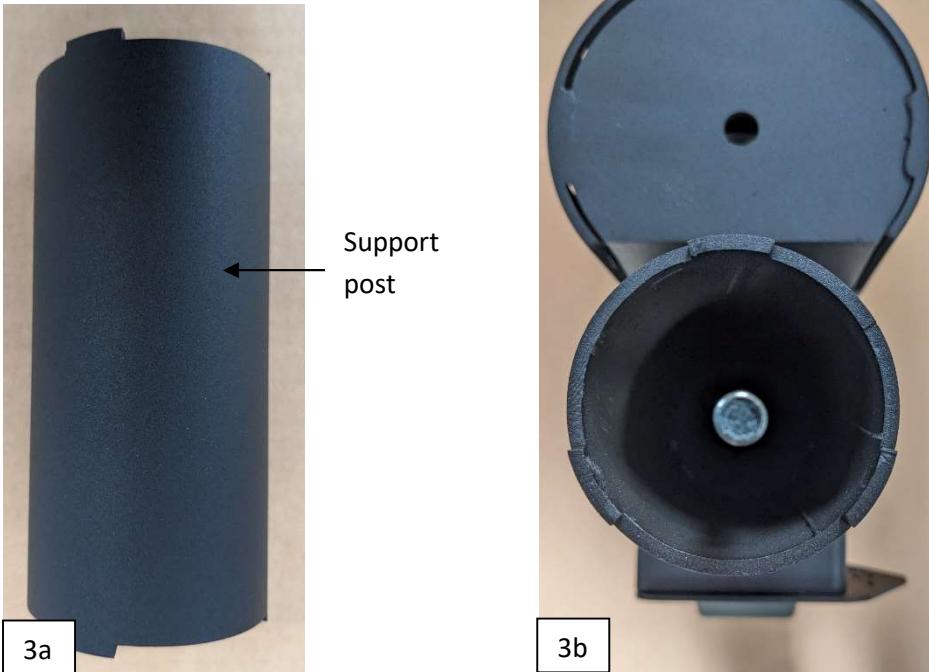
Please ensure you have all hardware and tools required before assembly.



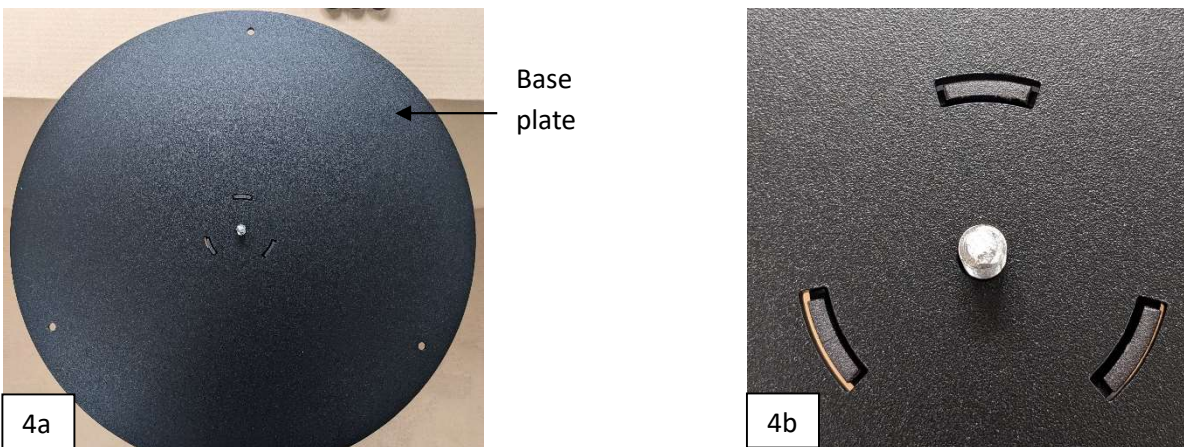
1. Place the Phoenix body upside down on a soft flat surface and lean the round face against a soft edge to keep the Phoenix body upright.
2. Insert the M8 bar into the thread plate on the bottom of the Phoenix body by turning clockwise, ensure it is fully threaded into the body before proceeding.



- Place the support post onto the Phoenix body with the castellations fitted through the slots.

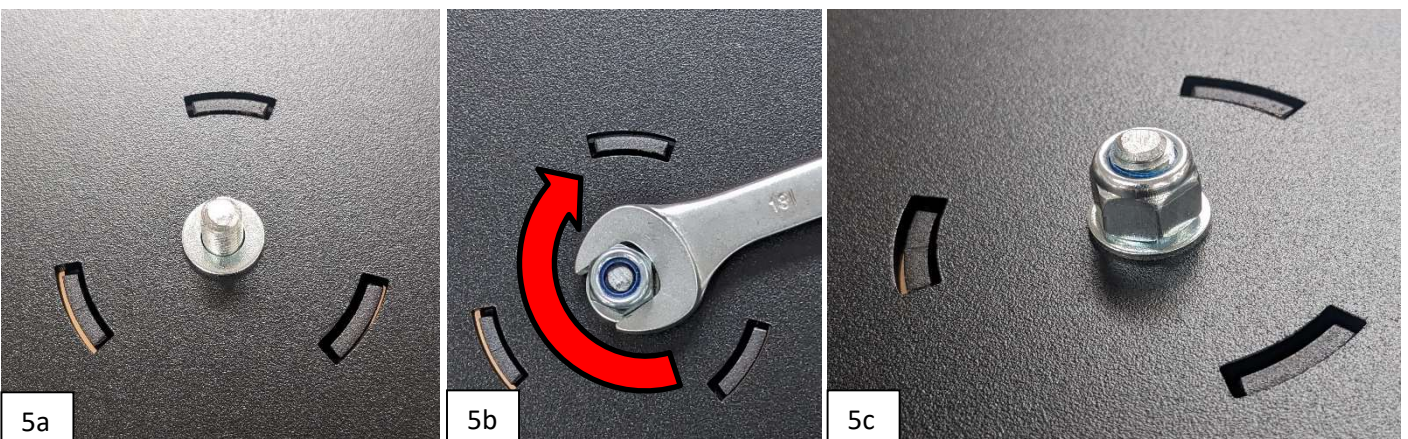


- Carefully place the base plate onto the support post ensuring the castellations and M8 bar fit through the plate and it sits securely.



- Place the M8 washer over the M8 bar and onto the base plate, hand thread the M8 nut onto the M8 bar and tighten clockwise with a 13mm spanner, ensure the blue side of the nut faces up.

TAKE CARE NOT TO OVERTIGHTEN THE NUT. ONLY TIGHTEN UNTIL THERE ARE NO GAPS BETWEEN THE NUT, WASHER AND BASE PLATE. TIGHTENING BEYOND THIS POINT RISKS DAMAGE.

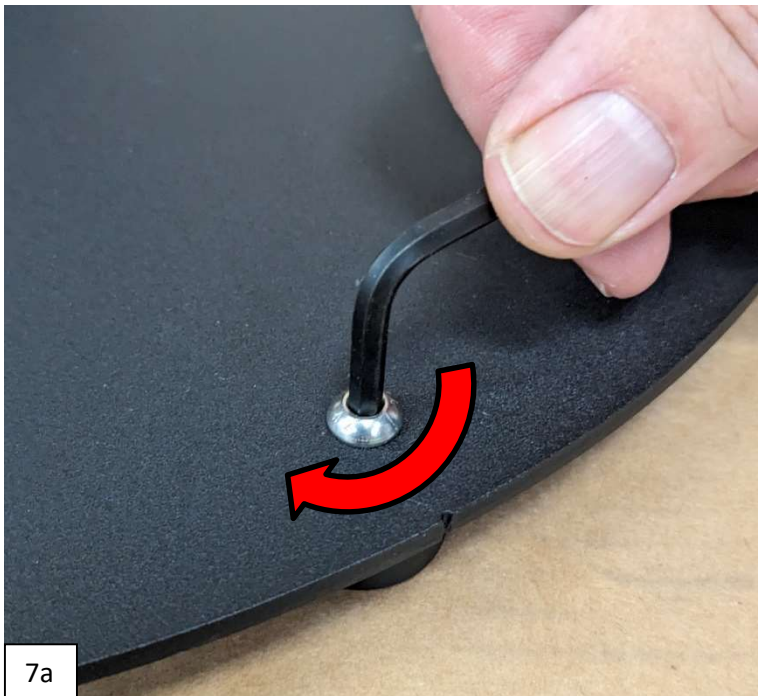


6. With the Phoenix still upside down, insert an M6 bolt through a hole located on the outer edge of the base plate. Hand thread one of the feet onto the bolt clockwise.

Repeat this step for all three feet.



7. Turn the assembled Phoenix over and place on a flat level surface. Tighten all three feet clockwise using the included Allen key.



Congratulations!

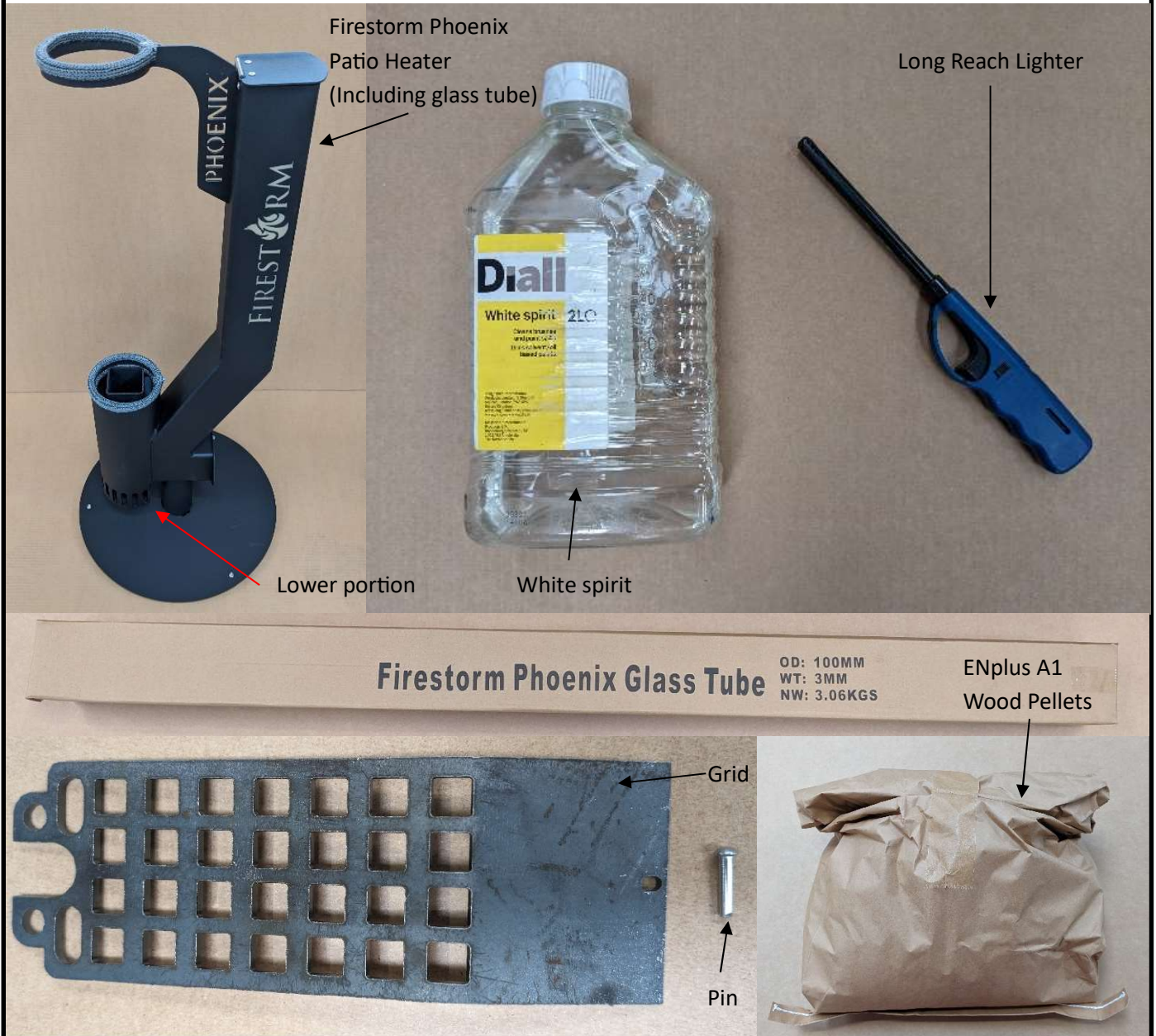
Your Firestorm Phoenix Patio Heater is now ready to use once the removable grid is in place.

Please refer to the Lighting & Maintenance Leaflet overleaf

Firestorm Phoenix Patio Heater - Lighting & Maintenance

Phoenix Lighting Checklist:

Please ensure you have all lighting tools necessary before starting.



General safety

The Phoenix heater gets very HOT! Please ensure that it is always somewhere where it is safe.

Site the Phoenix on flat level ground in a location protected from the wind, or shield the lower portion on all sides of the Phoenix pictured above. This will prevent potential extinguishing of the fire during use.

Remember that even after it has gone out the Phoenix will remain hot for around half an hour. Be mindful of the safety of anyone who is going to be in close proximity.

The heater has a glass cylinder. The glass tube is made from Borosilicate glass and so is heat resistant. Care must be taken to ensure it is not knocked by something hard. Particular care is necessary when taking apart, cleaning and assembling.

As the Phoenix gets going you may notice a humming noise coming from the tube, this is normal. This will subside once the Phoenix reaches full burn.

Never spray water onto the hot tube. The sudden change in temperature may cause the glass to break. Always let the Phoenix cool down before disassembly, moving or cleaning.

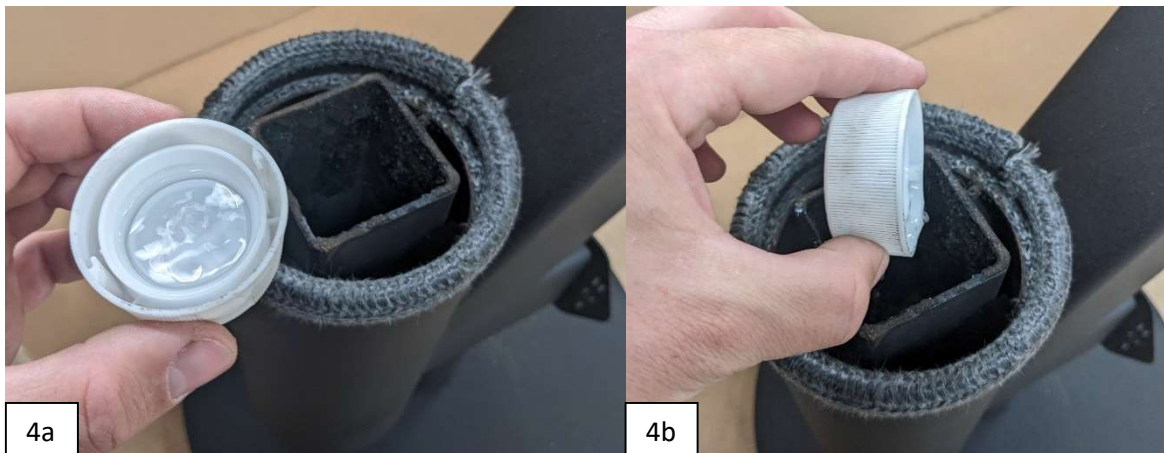
1. Place the Firestorm Phoenix Patio Heater on flat level ground in the desired position in your garden.
2. Insert the grid into the Phoenix air intake, securing it with the pin (2d). Ensure it slides smoothly over the top bar(2b), aligning flush with the air intake(2c). Lift the grid if necessary to properly seat it.



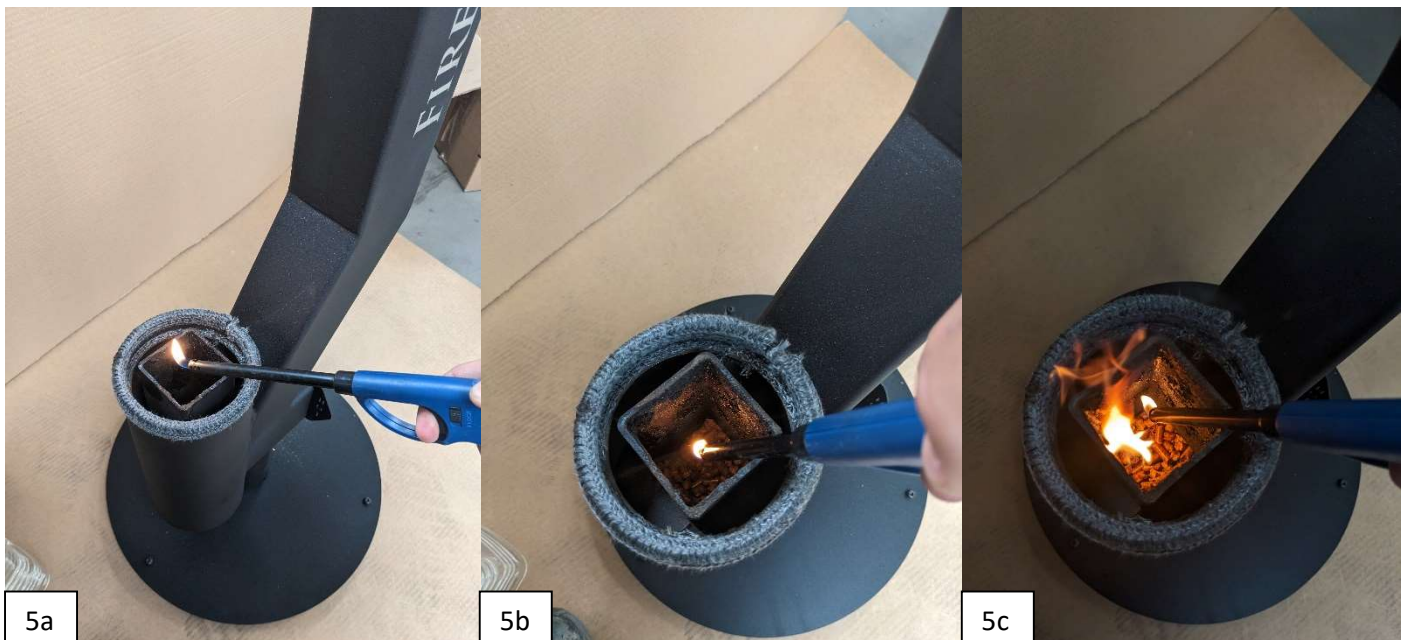
3. Open the Lid and fill the hopper with wood pellets and close the lid.



4. Pour one cap full of white spirit into the burning chamber, try to spread the white spirit over the whole area of pellets while pouring.



5. Using a long reach lighter, light the white spirit through the top of the burning chamber. Try and light in multiple locations if possible.

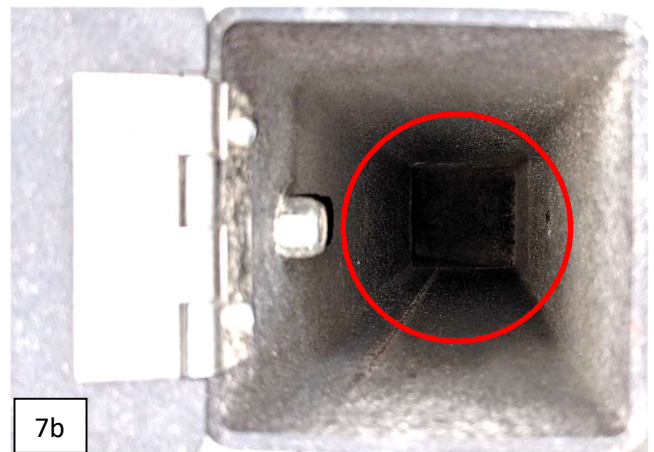
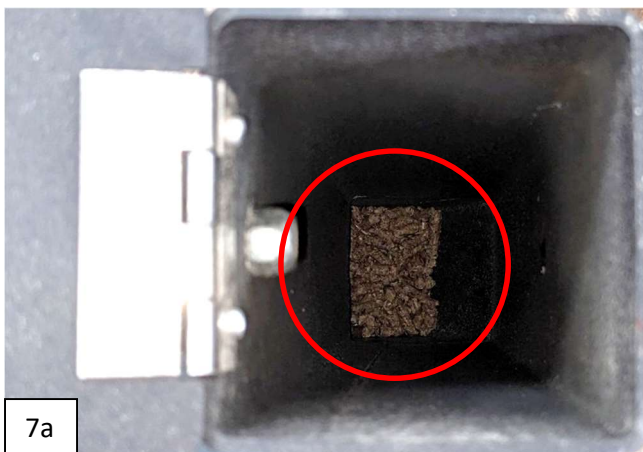


- Once lit, carefully slide the glass tube down through the top ring and seat on top of the burning chamber.



- Extend the burn time by adding more pellets to the Phoenix through the lid.

Important: Make sure the Phoenix does not have less than a quarter of a tube of pellets left before refilling. Refilling beyond this point can choke the fire and cause it to smoke rather than flame. If pellets are not visible in the bottom of the hopper then there is a risk the Phoenix will go out upon refilling.



Pellets visible, add more to extend!



Pellets not visible, do not refill!

Allow the Firestorm to self-extinguish, clean and relight.

- If you notice the flame getting smaller this is most likely due to ash build-up, this can easily be removed by scraping the ash out through the open bottom door of the Phoenix.
Important: The door will be hot to touch during use. Only touch the door using an appropriate tool or with a heat resistant glove for safety.
Poking the grate through the open door can also help but may not be necessary.
- Allow the Phoenix to burn through the remaining pellets and it will self-extinguish.
- Once completely cool, remove the glass tube and clean with the included sponge cleaner. Wet the sponge with cold water and push through the glass tube in one smooth motion. Rinse the inside of the tube with a garden hose and allow to air dry inside the Phoenix.
- Remove the grid from the Phoenix and clean all the ash using the scraper and poker tools in the accessory kit. The ash is 100% compostable so feel free to add it to your compost bin once cold.